



Installing MacBook Core Duo Hard Drive Replacement

Tools used in this guide

- [Phillips #00 Screwdriver](#)
- [T8 Torx Screwdriver](#)

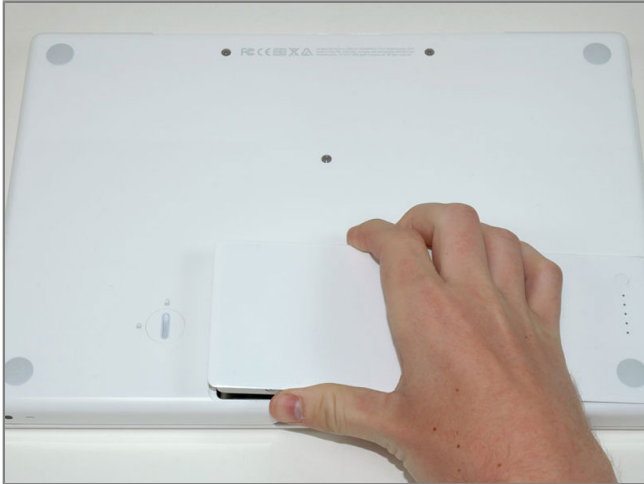
Parts relevant to this guide

- [320 GB 5400 RPM Western Digital SATA Hard Drive \(New\)](#)
- [500 GB 5400 RPM Western Digital SATA Hard Drive \(New\)](#)
- [320 GB 7200 RPM Hitachi SATA Hard Drive \(New\)](#)
- [500 GB 7200 RPM Seagate SATA Hard Drive \(New\)](#)



Step 1 - Battery

- Use a coin or flathead screwdriver to rotate the battery-locking screw 90 degrees clockwise.



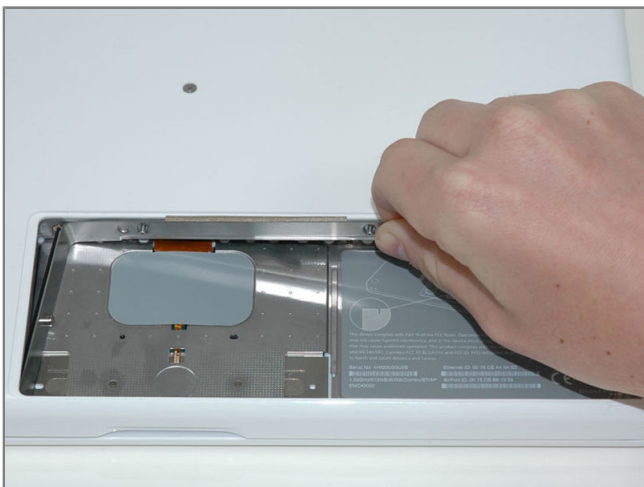
Step 2

- Lift the battery out of the computer.



Step 3 - Memory Cover

- ✕ Remove the three evenly-spaced Phillips screws from along the rear wall of the battery compartment.
- 🔧 The screws are captive to the metal memory cover.



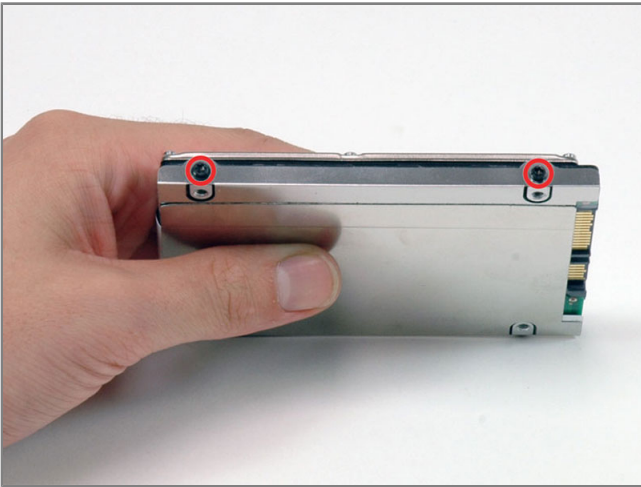
Step 4

- Lift up on L-shaped memory cover, slide it to the right, and lift it out of the computer.



Step 5 - Hard Drive

- Grasp the white plastic tab attached to the hard drive and pull it to the right, removing the hard drive from the computer.
- ☞ The hard drive goes back into its compartment with the label facing down.



Step 6 - Hard Drive Replacement

- ★ Remove the two black T8 Torx screws securing the silver bracket to the hard drive.



Step 7

- ★ Rotate the hard drive and remove the two black T8 Torx screws on the other side of the drive.



Step 8

- Lift the silver metal hard drive bracket off of the hard drive.
- 📌 You'll need to transfer this metal bracket to your new hard drive.